



C.L-CNC-019X

全自动拼料机

为胶板材料拼接量身定制

功能

自动摩擦拼接眼镜架胶板料，无须拼料水及其它附料，直接拼料，全自动送料，落料，抓取叶子。速度快，噪音低，稳定性强，拼接融合好，拼接面均匀。

优点

- 省时省人，无需拼料水，可直接拼合。
- 调机方便，翻单快捷。
- 环保、整洁。

Automatic Lamination machine-pads and end piece

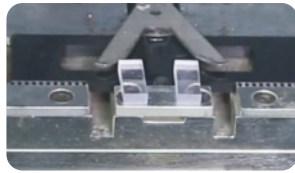
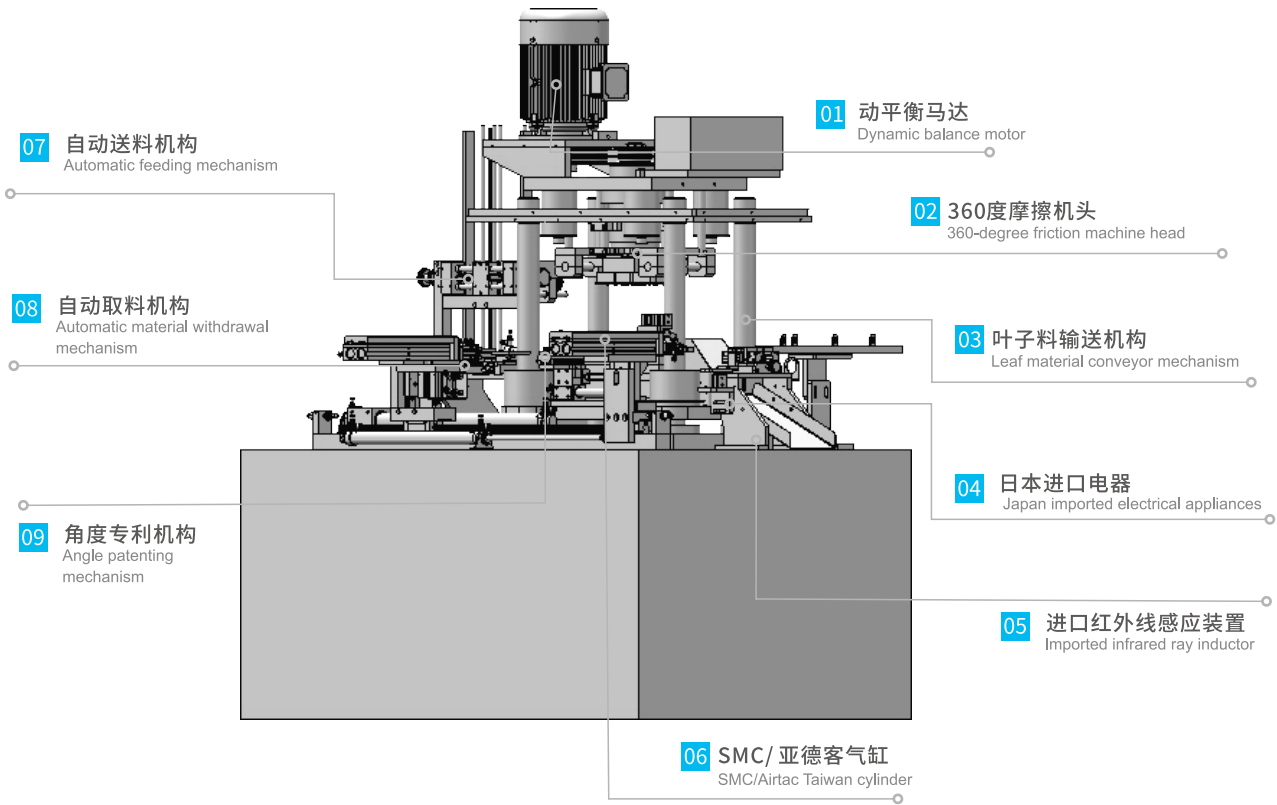
For plastic material tailored stitching

Functions

It can realize the automatic friction and splicing of acetate sheet, without splicing water and other accessories, realize the direct splicing, full-automatic splicing, automatic loading and grab of nose pad. It has fast speed, low noise, strong stability, good splicing and fusion and even splicing surface.

Advantages

- It can save time and labor, and realize the direct splicing without splicing water.
- The adjustment is convenient, and the cutting is fast.
- Environmentally-friendly and clean.



技术参数 / Technical Parameters

性能指标项 Performance index	标准值 standard value	工作频率 Operating frequency	600HZ
工作电压 Working voltage	380V/三相 80V/Three-phase	气源压力 Air pressure	600HZ
操作系统 Operating system	PLC人机界面 PLC man-machine interface	床体重量(KG) Machine tool weight(KG)	700KG
机床功率 Machine power	250W	机床尺寸 Machine dimension	1200*1000*1650mm
工作噪音 Working noise	550RMP	生产速度 Production speed	3幅/分钟 Three deputies/minute